

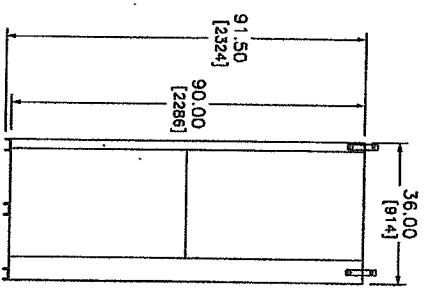
Q2C Number: 25815083	Quote Number: 6	Revision Number: 0
Project Name: PRINCE WILLIAM COUNTY MS	Quote Name: PWC SWITCHBOARD	

Item No.	Qty.	Catalog Number / Details
024-00	1	<p>Designation: Switchboard SQUARE D CUSTOM QED SWITCHBOARD QED Switchboard</p> <hr/> <p>Square D Power Style Custom Switchboard Designed and Tested in accordance with: UL 891/NATIONAL ELECTRIC CODE/NEMA PB-2 System Voltage: 480Y/277V 3Ph 4W 60Hz Source Description - Single Main System Ampacity - 2000A Bussing - Copper Plated with Silver Neutral Bus - 100% Max Available Fault Current (RMS) - 65kA Enclosure - Type 1 Accessibility: Front Only Exterior Paint Color - ANSI 49 Ground Lug provided for each device Optional Copper Ground Bus Lineup 1 BTU: 8958</p> <p>Dimensions</p> <hr/> <p>2 - 42" Wide Section(s) 2 - 36" Deep Enclosure(s) Dimensions: 84.00" W X 36" D X 91.5" H Approximate Weight: 2480</p> <p>Incoming Requirements</p> <hr/> <p>Suitable for Use As Service Entrance Entry Point: Right of Lineup, Through the Bottom Connection Type: Cable Hot Sequence Utility: NOVEC Power Meter - PM-850RD 3 CTs Power Meter - 3 phase 4 wire wye 480Y/277</p> <p>Mains</p> <hr/> <p>1 - 2000AS/2000AT 480V 100% Rated 65 kA 3 Pole UL, Fixed Mounted Micrologic Circuit Breaker: Type RK Ammeter Trip Unit, Long Time, Short Time, Instantaneous, Ground Fault Overcurrent Trip Switch 1A/1B Form C Nameplate - White Surface / Black Letters</p> <p>Feeders</p> <hr/> <p>3 - 600AF/400AT 480V 80% Rated 65 kA 3 Pole UL, Group Mounted Thermal Magnetic Circuit Breaker: Type LC 1 - 600AF/500AT 480V 80% Rated 65 kA 3 Pole UL, Group Mounted Thermal Magnetic Circuit Breaker: Type LC 4 - 150AF/150AT 480V 80% Rated 65 kA 3 Pole, Group Mounted Thermal Magnetic Circuit Breaker: Type HJ 2 - 150AF/100AT 480V 80% Rated 65 kA 3 Pole, Group Mounted Thermal Magnetic Circuit Breaker: Type HJ 1 - 150AF/60AT 480V 80% Rated 65 kA 3 Pole</p>

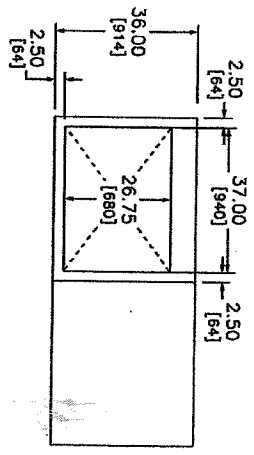
Q2C Number: 25815083	Quote Number: 6	Revision Number: 0
Project Name: PRINCE WILLIAM COUNTY MS	Quote Name: PWC SWITCHBOARD	

Item No.	Qty.	Catalog Number / Details
		<p>Group Mounted Thermal Magnetic Circuit Breaker: Type HJ</p> <p>1 - 250AF/225AT 480V 80% Rated 65 kA 3 Pole , Group Mounted Thermal Magnetic Circuit Breaker: Type JJ</p> <p>2 - 250AF/200AT 480V 80% Rated 65 kA 3 Pole , Group Mounted Thermal Magnetic Circuit Breaker: Type JJ</p> <p>Common Feeder Features: Nameplate - White Surface / Black Letters</p> <p>Estimated Ship Days (ARO): 40 Working Days</p>
025-00	1	<p>Designation: SWBD Startup SQDSERVICE1. Startup Services - Straight Time System Designation:</p> <p>CONSISTING OF Square D will perform the Scope of Work per Square D document number 01801B0001 R5/01 "Square D Services Procedures for Startup and Commissioning of Electrical Equipment". Work will be performed during Straight Time (any scheduled 8 hour period between 06:00 and 18:00 hours Monday thru Friday)</p> <p>It is estimated that the service will be performed using one technician with all equipment and tests performed in immediate succession, unless otherwise specified. If equipment is not available or prepared to be tested in the number of days specified, additional travel and expense charges may apply.</p> <p>For each hour that SDS is delayed at the job site due to the unavailability of the equipment for any reason, a charge at the applicable T&M rates will be added to the invoice.</p> <p>Startup scope of work includes Square D technician supervision during energization of equipment. Quoted price is based on energization during final day of inspection and testing. If additional trip is required in order to provide energization supervision, additional travel, expense and labor charges will apply. To schedule date for start of work, call: 1-888-SQUARED</p> <p>Square D services must be contacted prior to 2 weeks from required date of service to avoid additional charges. Rev: 051207</p> <p>Jobsite Distance under 50 miles</p> <p>Services will make up to 1 Trip to the Job Site</p>

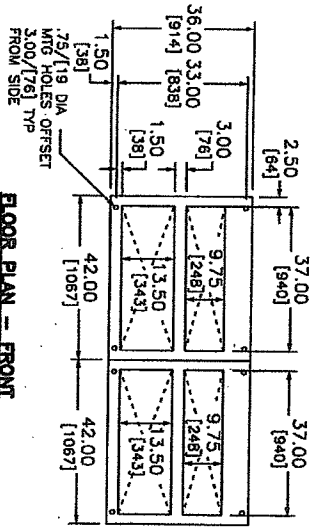
REV	DESCRIPTION	BY	DATE	APP	DATE	APP	DATE	APP	DATE	APP	DATE



LEFT SIDE VIEW



TOP VIEW - FRONT

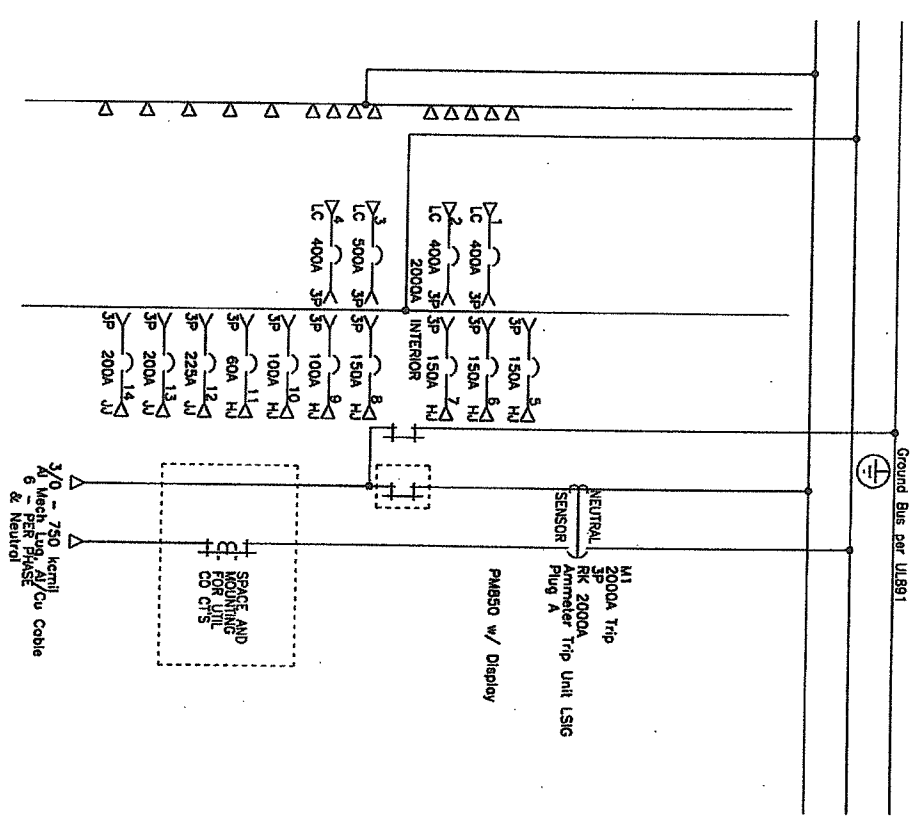


FLOOR PLAN - FRONT

ENGLISH DIMENSIONS: INCHES

JOB NAME:	VIK BUDGET	EQUIPMENT DESIGNATION:	Switchboard
JOB LOCATION:	WASHINGTON DC	EQUIPMENT TYPE:	Old Switchboard
DRAWN BY:	(Q2C)	DRAWING TYPE:	SIDE, TOP VIEW & FLOOR PLAN
DATE:	April 14 2008		
DRAWING STATUS:	0001		

REV	DESCRIPTION	BY	DATE	APPROVED	DATE	APPROVED	DATE	APPROVED	DATE	APPROVED	DATE



SECTION 1

SECTION 2

JOB NAME:	VIK BUDGET	EQUIPMENT DESIGNATION:	Switchboard
JOB LOCATION:	WASHINGTON DC	EQUIPMENT TYPE:	QED Switchboard
DRAWN BY:	QZG	DRAWING TYPE:	ONE LINE
ENGR:		DATE:	April 14 2009
DRAWING STATUS:	QUOTE	DWG#:	02-5815-01

REV	DESCRIPTION	BY	DATE

POWER STYLE QED-2 SWITCHBOARD

SECT CRT NO	GMD HEIGHT	DEVICE/FRAME RATING	TRIP AMP	FUSE/TRIP	#P	DESIGNATION	N/P	LUG INFORMATION		ACCESSORIES	
								QTY	PHASE WIRE RANGE		QTY
1	7.5 in	LC	400A	-	3P	Panel PA	Yes	2	4/0 - 500kcmil	1	250 - 600 kcmil
1	7.5 in	LC	400A	-	3P	Spore	Yes	2	4/0 - 500kcmil	1	250 - 600 kcmil
1	7.5 in	LC	500A	-	3P	Chiller	Yes	2	4/0 - 500kcmil	2	250 - 600 kcmil
1	4 7.5 in	LC	400A	-	3P	MCC	Yes	2	4/0 - 500kcmil	1	250 - 600 kcmil
1	4.5 in	HJ	150A	-	3P	Panel PC	Yes	1	#14 - 3/0 AWG	1	#6 - 350 kcmil
1	4.5 in	HJ	150A	-	3P	Panel PD	Yes	1	#14 - 3/0 AWG	1	#6 - 350 kcmil
1	4.5 in	HJ	150A	-	3P	Panel PE	Yes	1	#14 - 3/0 AWG	1	#6 - 350 kcmil
1	4.5 in	HJ	150A	-	3P	Panel PF	Yes	1	#14 - 3/0 AWG	1	#6 - 350 kcmil
1	4.5 in	HJ	100A	-	3P	Panel HP	Yes	1	#14 - 3/0 AWG	1	#6 - 350 kcmil
1	10 4.5 in	HJ	100A	-	3P	Spore	Yes	1	#14 - 3/0 AWG	1	#14 - 1/0 AWG
1	11 4.5 in	HJ	60A	-	3P	Emergency	Yes	1	#14 - 3/0 AWG	1	#14 - 1/0 AWG
1	12 4.5 in	HJ	225A	-	3P	Spore	Yes	1	3/0 - 350 kcmil	1	#6 - 350 kcmil
1	13 4.5 in	HJ	200A	-	3P	Panel PG	Yes	1	3/0 - 350 kcmil	1	#6 - 350 kcmil
1	14 4.5 in	HJ	200A	-	3P	MUFR T-1	Yes	1	3/0 - 350 kcmil	1	#6 - 350 kcmil
2	UCT	2000A	2000A	A-LSIG	3P	Main Breaker	Yes	-	-	-	-
2	UCT	2000A	2000A	-	-	NOVEC	No	6	3/0 - 750 kcmil	6	3/0 - 750 kcmil

LEGEND

GF	Ground Fault
OC	Over Current Trip Switch
PM	Power Meter

JOB NAME: VIK BLUES	EQUIPMENT DESIGNATION: Switchboard
JOB LOCATION: WASHINGTON DC	EQUIPMENT TYPE: QED Switchboard
DRAWN BY: (220)	DRAWING TYPE: SCHEDULE
DATE: April 14 2009	DWG: Q2815083-01
DRAWING STATUS: QUOTE	REV: 1