

# OFFICE OF THE OMBUDS

Quarterly Report  
April 1, 2026 – June 30, 2026



## Office Overview

The Prince William County Public Schools (PWCS) Office of the Ombuds operates in accordance with the International Ombuds<sup>1</sup> Association (IOA) Code of Ethics and adheres to the following principles:



### Confidentiality~Impartiality~Independence~Informality

The Ombuds Office seeks to empower those who contact the office to resolve issues on their own if possible. Depending on the situation, the Ombuds Office may utilize different methods/techniques to help the visitor<sup>2</sup>. Some of the common methods/techniques used include:

- Listens and helps clarify visitor concerns
- Provides information and explores available options
- Identifies underlying issues and interests
- Facilitates discussions to resolve issues

While the Ombuds Office can assist most individuals, there are some actions the Ombuds **CANNOT** take, such as:

- Act as an individual’s advocate
- Serve as a formal office of legal notice for PWCS
- Conduct formal investigations
- Maintain records

To learn more about the office and how we can support you, please visit our [website](#). Due to the confidential nature of the office, visitors are seen by appointment either in-person, virtually, or over the phone. To schedule an appointment directly, please use our [online booking system](#). For any questions/concerns, you can contact us in the following ways:

Email: [ombuds@pwcs.edu](mailto:ombuds@pwcs.edu)  
Phone: 703-791-8587

The Ombuds Office is located at:

Independent Hill Complex  
14800 Joplin Road, T 50-01  
Manassas, VA 20112

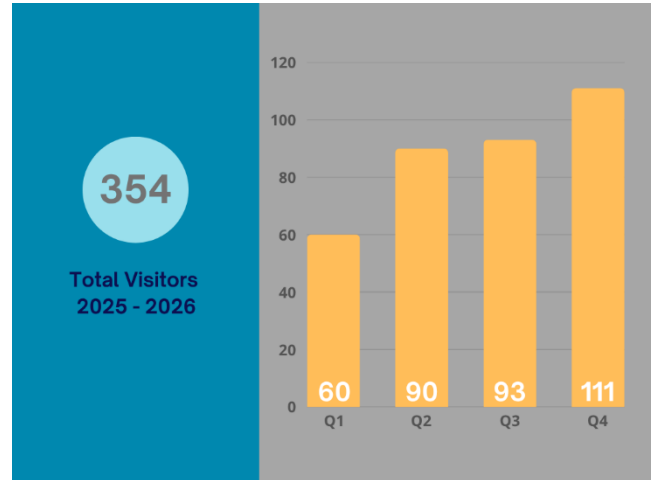
The Ombuds Office is composed of Ombuds, Monique “Mo” Bookstein, CO-OP<sup>®</sup> and Ombuds Specialist, Rosamaria Manzines.

<sup>1</sup> The term “Ombuds” includes all applicable nomenclature in use for an organizational ombudsperson.

<sup>2</sup> The term “visitor” describes those who engage the services of the Ombuds.

## Data Review

The Office of the Ombuds continues to provide parents, students, employees, and members of the school community with assistance in resolving school-related concerns, conflicts, and issues. A single “case” is defined by the individual who is experiencing the conflict.



## Visitor Demographics

### Students (N = 1)

Individual who attends PWCS

### Community (N = 6)

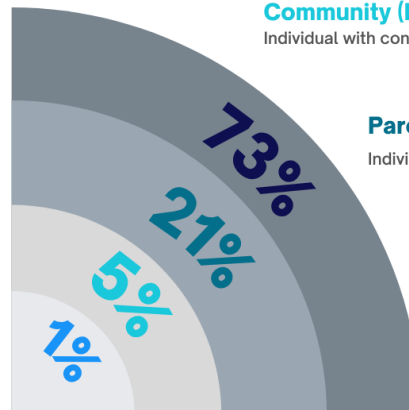
Individual with concerns regarding PWCS

### Parents/Guardians (N = 23)

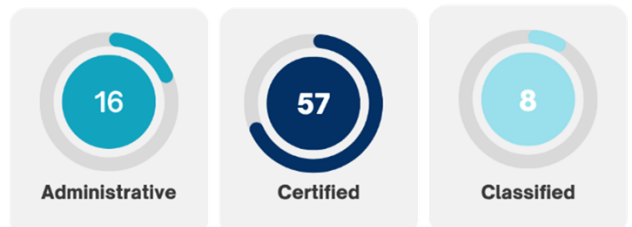
Individual with a student who attends PWCS

### Employees (N = 81)

Individual who is employed by PWCS



## Employee Visitors



# OFFICE OF THE OMBUDS

## Quarterly Report April 1, 2026 – June 30, 2026

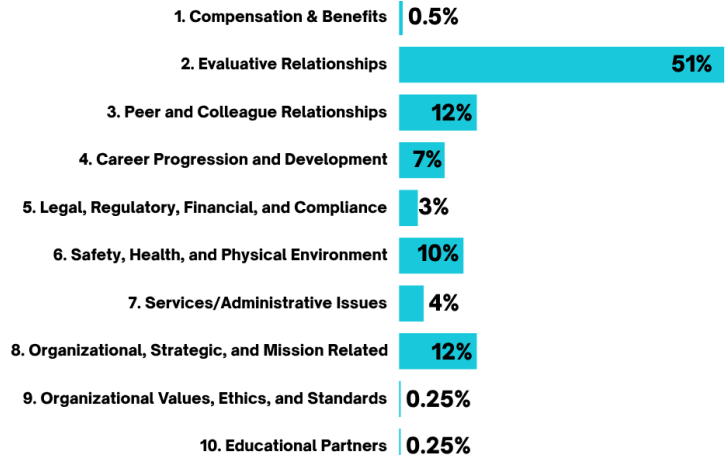


### Uniform Reporting Categories

Below are the IOA Uniform Reporting Categories. This is a list of categories developed by the IOA and used by Organizational Ombuds around the world to anonymously classify the types of issues brought to their offices and identify trends in requests for services. For a more detailed explanation of these categories, see the Ombuds website.

1. Compensation and Benefits;
2. Evaluative Relationships;
3. Peer and Colleague Relationships;
4. Career Progression and Development;
5. Legal, Regulatory, Financial, and Compliance;
6. Safety, Health, and Physical Environment;
7. Services/Administrative Issues;
8. Organizational, Strategic, and Mission Related;
9. Values, Ethics, and Standards; and
10. Educational Partners

### Employee Visitors Concerns



### Uniform Reporting Categories Data

Visitors often express concerns related to more than one category. Within each category, there are numerous subcategories. For a more detailed explanation of this data, see the Ombuds website.

Specific Issue Category	Q1	Q2	Q3	Q4
1. Compensation & Benefits	3	6	2	2
2. Evaluative Relationships	122	85	106	171
3. Peer and Colleague Relationships	22	44	35	41
4. Career Progression and Development	11	15	15	24
5. Legal, Regulatory, Financial, and Compliance	9	3	13	15
6. Safety, Health, and Physical Environment	22	25	36	40
7. Services/Administrative Issues	24	30	41	50
8. Organizational, Strategic, and Mission Related	18	44	33	41
9. Values, Ethics, and Standards	1	1	0	1
10. Educational Partners	45	104	87	79

### Parent/Guardian Visitors Concerns



### Community Visitors Concerns



### Student Visitors Concerns

