



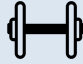


Student Vision Profile January 2025

Your roadmap toward a thriving future begins here. This guide is designed to support you as you engage in meaningful conversations about life after high school. In PWCS, a student's trajectory is limitless. The information provided in this Student Vision Profile report will ensure that all students and their families have the tools necessary to navigate the road that lies ahead. After reviewing your Student Vision Profile, please complete the [Parent Feedback Survey](#) or the [Student Feedback Survey](#).

John's Progress Toward a Thriving Future

Category	Your Data	What It Means
 Grade Point Average (GPA)	0.29 As of September 2024	Your teachers, counselor, and family are here to support you!
 Graduation Status	Off Track	Your teachers, counselor, and family are here to support you!
 Current Pathway Plan	Undecided	Talk to your family and counselor to help decide next steps.
 Career Interest Grade 7	Take the Career Cluster Assessment	You did not complete the Career Cluster Finder in Grade 7. Please log in to Naviance to complete the assessment.
 Top Strength Grade 8	Discoverer	You are very curious and ask "why".

How to Use This Guide

Start the Conversation

When you see this prompt you will find helpful tips to guide your conversation.



Get Moving

When you see this prompt there is an action to take.



Think About It

When you see this prompt think about what is possible.



Explore Resources

Resources are provided to support you along this journey. [Naviance](#), [StudentVUE](#), [ParentVUE](#), [PWCS Course Catalog](#), and [PWCS Career and Transition Services](#).



Profile of a Graduate

The PWCS Vision is that every student will graduate on time with the knowledge, skills, and habits of mind necessary to create a thriving future for themselves and their community.



Essential Concepts

Advanced Academics: Classes such as AP, IB, Cambridge, CTE, or Dual Enrollment where you earn weight in your GPA and have the potential to earn college credit. Search the college registrar's website for [transfer credit](#) standards.

Certification or Credential: A certificate is an official document that proves you've completed a course or achieved a particular skill. A credential is a broader term that refers to a qualification or achievement.

Financial Aid: Funds such as loans or grants that are provided to help pay tuition, fees, and other educational expenses.

Grade Point Average (GPA): Weighted GPA reflects the difficulty of the courses you take, giving extra points such as 5.0 representing A. Unweighted GPA, on the other hand, doesn't consider course difficulty and uses a simple 4.0 scale where an A equals 4.0

John's Scores As of September 2024

SAT Learn more about the SAT.	ACT Learn more about the ACT.	ASVAB Learn more about the ASVAB.
---	---	---



John's Self-Discovery Results

The [self-discovery process](#) fosters critical self-awareness and reflection which are invaluable qualities for college and career readiness. Students engage in this process through school counseling curriculum and can access these assessments anytime through Naviance. Log in to [Naviance](#) to view the full reports.

Start the Conversation
Self-Reflection

Review these results. "Does this seem like you?
Was there anything surprising about these results?"

<p>Career Grade 7</p>	<p>Top Strength Grade 8</p>	<p>Learning Style Grade 9</p>	<p>Personality Type Grade 11</p>
<p>Take the Career Cluster Assessment</p> <p>Log in to Naviance to learn about your top career interest.</p> <p>Take the Career Key Assessment</p> <p>Log in to Naviance to take the "Career Key" assessment to identify your Holland Personality Type.</p>	<p>Discoverer</p> <p>A thinker and learner, you are excited about exploring ideas and making connections. You like to ask the questions "How?" and "Why?"</p> <p>Log in to Naviance to view the full report.</p>	<p>These results help students identify their best-fit sensory and mindset preferences when studying. Log in to Naviance to view your full profile.</p>	<p>Take AchieveWorks Personality Assessment</p> <p>Log in to Naviance to complete your personality assessment. Results match personality type with best-fit careers and accompanying college majors.</p>



In-Demand Career Pathway Health Sciences

	High School Diploma		Associate Degree		Bachelor's Degree		Master's Degree or Higher	
Virginia Growth Industry Jobs	Claims Adjusters, Examiners, & Investigators	First-Line Supervisors/Managers of Office & Administrative Support Workers	Nuclear Medicine Technologists	Diagnostic Medical Sonographers	Natural Sciences Managers	Medical & Health Services Managers	Podiatrists	Pharmacists
Median Annual Income	\$38,320		\$53,930		\$61,400		\$83,940	
Colleges to Consider	NOVA , Germanna Community College , Prince George Community College		Brightpoint Community College , Eastern Shore Community College , NOVA		University of Virginia , Old Dominion University , Virginia Union University		Virginia Commonwealth University , Virginia State University , Virginia Union University	
Degrees & Certificates to Consider	EMT Paramedic, Surgical Technology, Health Information		EMT Paramedic, Surgical Technology, Health Information		Clinical Laboratory Science/ Medical Technology, Psychology		Physician Assistant, Health Care Administration, Psychology	

John's Action Steps

Below you'll find action steps for a variety of postsecondary school plans designed to ensure success. Discuss these different pathways and collaborate with school transition specialists, counselors, college and career counselors, teachers, and mentors.

Get Moving

Postsecondary Plan Checklist

Consider postsecondary opportunities and which pathways might be a good fit and of interest now. Plans and interests can adjust over time.

Prepare For Your Future

Take action and plan ahead! Engage in opportunities now!

Graduation Action Steps	1. Maintain a daily routine to stay organized and healthy!	2. Get involved in your community, athletics, and/or clubs.	3. Turn in any necessary work and check StudentVUE regularly.	4. Study for final exams in an environment that helps you prepare!	5. Remember each course counts! Take care and surround yourself with supportive people!	
Career Connected Learning Action Steps	1. Reflect on your employability skills and values. Take advantage of opportunities in CTE classes.	2. Review current work-based learning opportunities and prepare your resume.	3. Prepare yourself for PWCS Career Fairs by reflecting on your career interests.	4. Research credential and certificate opportunities you can earn.	5. Attend the PWCS summer job fair. Internships are available in many industries.	
College Action Steps	1. Courses, grades, attendance, and more are on your transcript as mandated by VDOE.	2. Get involved in ways that are authentic to your interests and values.	3. Attend college visits at your high school . College applications open in August.	4. Complete the FAFSA for both need-based and merit aid; opens in fall of senior year.	5. End the year with your best effort. A strong GPA is needed for merit scholarships.	
Military Action Steps	1. All careers exist in the military . Explore your best-fit pathways!	2. Scores from the ASVAB exam can give you insight into careers.	3. Pass the physical! Your recruiter will discuss eligibility requirements with you.	4. Connect with a service enlistment counselor to identify the right job specialty.	5. Accept an offer through ROTC , an academy appointment, or via the oath of enlistment.	
Apprenticeship Program Action Steps	1. Learn about different careers that offer apprenticeships .	2. Find approved apprenticeship programs as you build your career.	3. Review the application process and prepare for apprenticeship exams and interviews!	4. Complete the apprenticeship program applications by the deadline.	5. Maintain good work habits with a daily routine and organization.	

What Does "Best-Fit" Mean for You?

There are a number of factors to consider when identifying a [best-fit](#) school. Consider the following aspects to build a foundation for a good college experience. Search college majors and take a deep dive into the major's academic advising resources.



Cost

Identify schools that are a good financial fit by becoming aware of the college's scholarship and aid opportunities. Have an open family discussion regarding savings, scholarship needs, and financial needs. [Financially plan](#) and research [military benefits](#).



Programs of Study

Does the college have the major you wish to study that aligns with your goals?



Location

Is it important to be close to home or exploring a new part of the country?



Size

Do you thrive in large groups or prefer smaller classes that enable more interaction?



Student Life

Visit the school you are considering and talk to students to learn about the culture.

College and GPA

- Students apply to college at the beginning of their senior year.
- GPA represents an average academic performance over time.
- Taking advanced courses boosts the GPA due to weighted credit which signifies the intensity of the curriculum.
- Taking advanced courses models college readiness and strengthens your chance of being admitted to your college of choice.

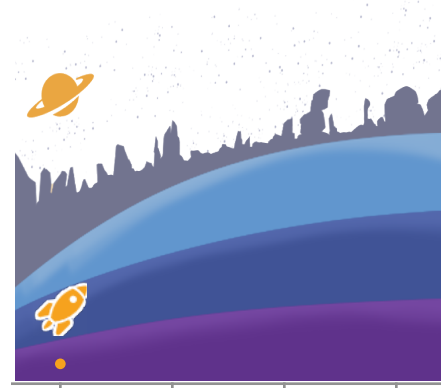
Think About It

Consider all possibilities and research colleges and majors.

Use the [SuperMatch College Search](#) to favorite colleges for future research.

John's GPA by Grade

Check out your cumulative GPA progress throughout high school in the graphic below!



9th 10th 11th 12th

College Admission GPA

GPA used in the application process includes 9-11th grade because students apply to college at the beginning of their senior year.

[College Entrance Testing Info](#)

Selective Institutions with 1,000+ PWCS Applicants	Self-Reported Acceptance Rate	Avg. Graduation GPA	Avg. SAT*	Avg. ACT*
Most Selective- National ex. Stanford University & Johns Hopkins University	5.92%	4.4	1384*	N/A
Highly Selective- Virginia ex. University of Virginia & Virginia Tech	17.89%	4.3	1282*	34*
Very Selective- Virginia ex. George Mason University & James Madison University	56.39%	3.8	1075*	29*
Moderately Selective- Virginia ex. Radford University & Liberty University	57.03%	3.6	1038*	24*

*Student may have applied without these scores