

# SCHOOL BOARD

## Citizens of Prince William County

### Prince William County School Board

**Babur B. Lateef, M.D.**  
Chairman At-Large

**Tracy L. Blake**  
Vice Chair  
Neabsco District

**Erica C. Tredinnick**  
Brentsville District

**Jennifer T. Wall**  
Gainesville District

**Richard M. Jessie**  
Occoquan District

**Justin David Wilk**  
Potomac District

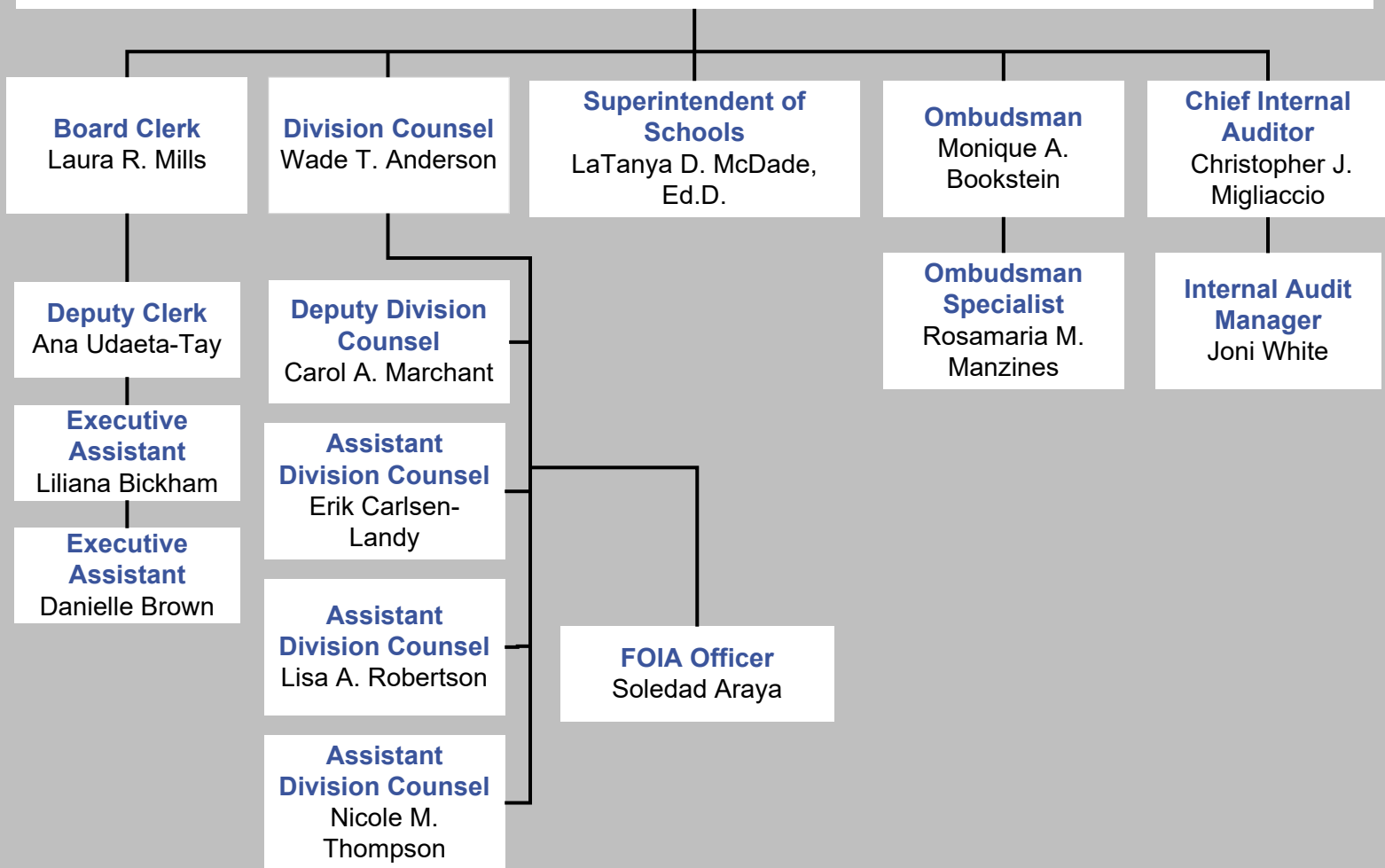
**Loree Y. Williams**  
Woodbridge District

**Lisa A. Zargarpur**  
Coles District

**Almudena Latorre**

**Alaa Rashed**  
Student Representatives

**Kailey Thom**



# OFFICES OF THE DIVISION COUNSEL, OMBUDSMAN, AND AUDITOR

## Prince William County School Board

**Chief Internal Auditor**  
Christopher J. Migliaccio

**Internal Audit Manager**  
Joni White

**Division Counsel**  
Wade T. Anderson

**Paralegal/  
Executive Assistant**  
Claudia L. Cartagena

**Deputy Division Counsel**  
Carol A. Marchant

**FOIA Officer**  
Soledad Araya

**Assistant  
Division Counsel**  
Erik Carlsen-Landy

**Assistant  
Division Counsel**  
Lisa A. Robertson

**Assistant  
Division Counsel**  
Nicole M. Thompson

**Ombudsman**  
Monique A. Bookstein

**Ombudsman Specialist**  
Rosamaria M. Manzines

**Prince William County School Board**

**Superintendent of Schools**  
LaTanya D. McDade, Ed.D.

**Executive Assistant**  
Jessica D. Beverley

**Chief of Staff**  
Elisa M. Botello

**Deputy Superintendent**  
Carol E. Flenard, Ed.D.

**Executive Assistant**  
Laura L. McChain

**Chief Equity Officer**  
Charmelle J. Ackins, Ed.D.

**Associate Superintendent  
for Special Education**  
Ashley E. Reyher, Ed.D.

**Associate Superintendent  
for Middle Schools**  
Corey E. Harris

**Chief Financial Officer**  
Shakeel Yusuf

**Associate Superintendent  
for Student Services and  
Post-Secondary Success**  
Denise M. Huebner

**Associate Superintendent  
for Middle Schools**  
Catherine R. Porter-Lucas

**Chief Human Resources  
Officer**  
Donna L. Eagle, Ed.D.

**Associate Superintendent  
for Teaching and Learning**  
Stephanie A. Soliven, Ed.D.

**Associate Superintendent  
for Central Elementary  
Schools**  
R. Todd Erickson

**Chief Information Officer**  
Matthew S. Guilfoyle

**Associate Superintendent  
for High Schools**  
Gregory S. Hood

**Associate Superintendent  
for Eastern Elementary  
Schools**  
Kimberly A. Werle

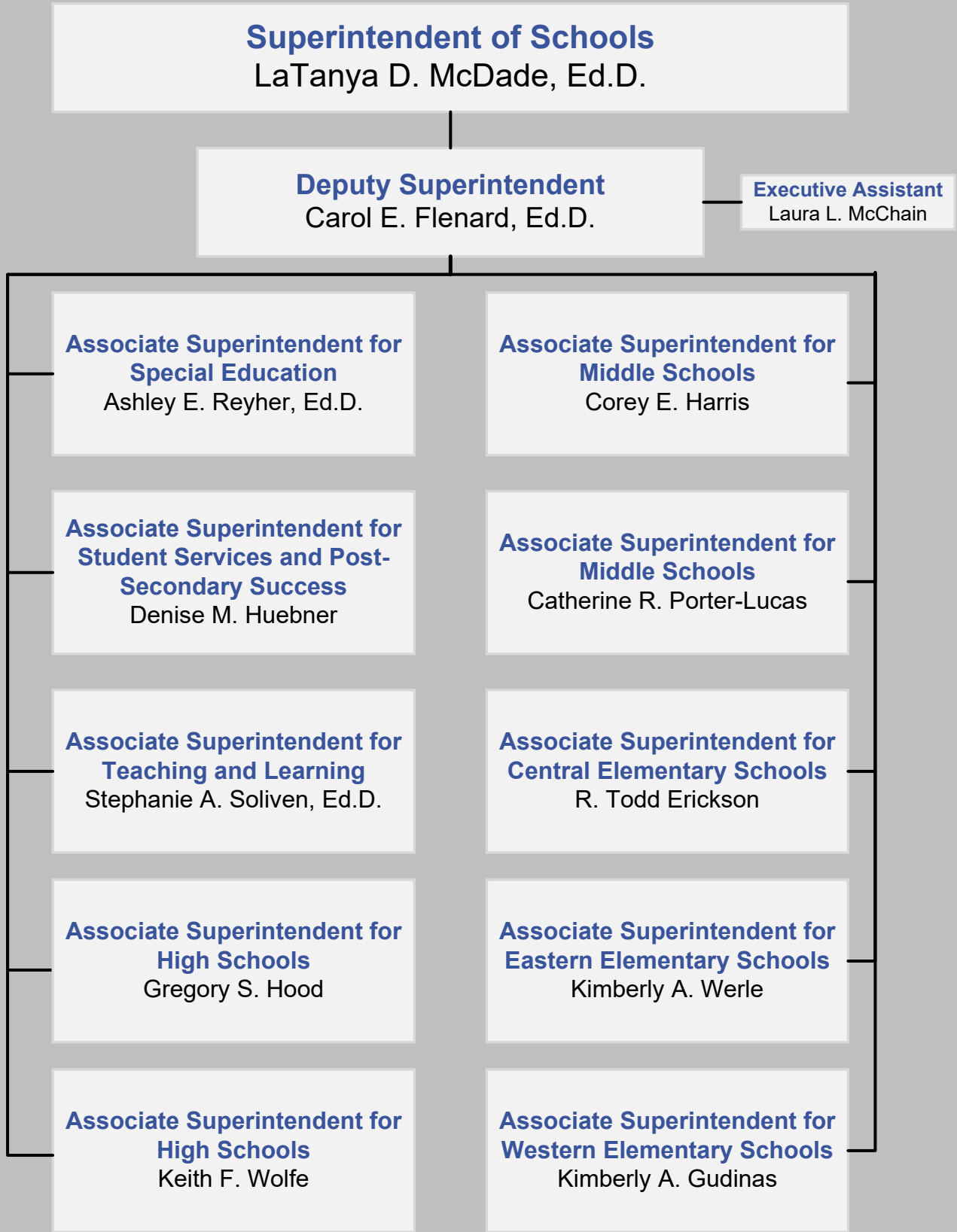
**Chief Operating Officer**  
Vernon J. Bock

**Associate Superintendent  
for High Schools**  
Keith F. Wolfe

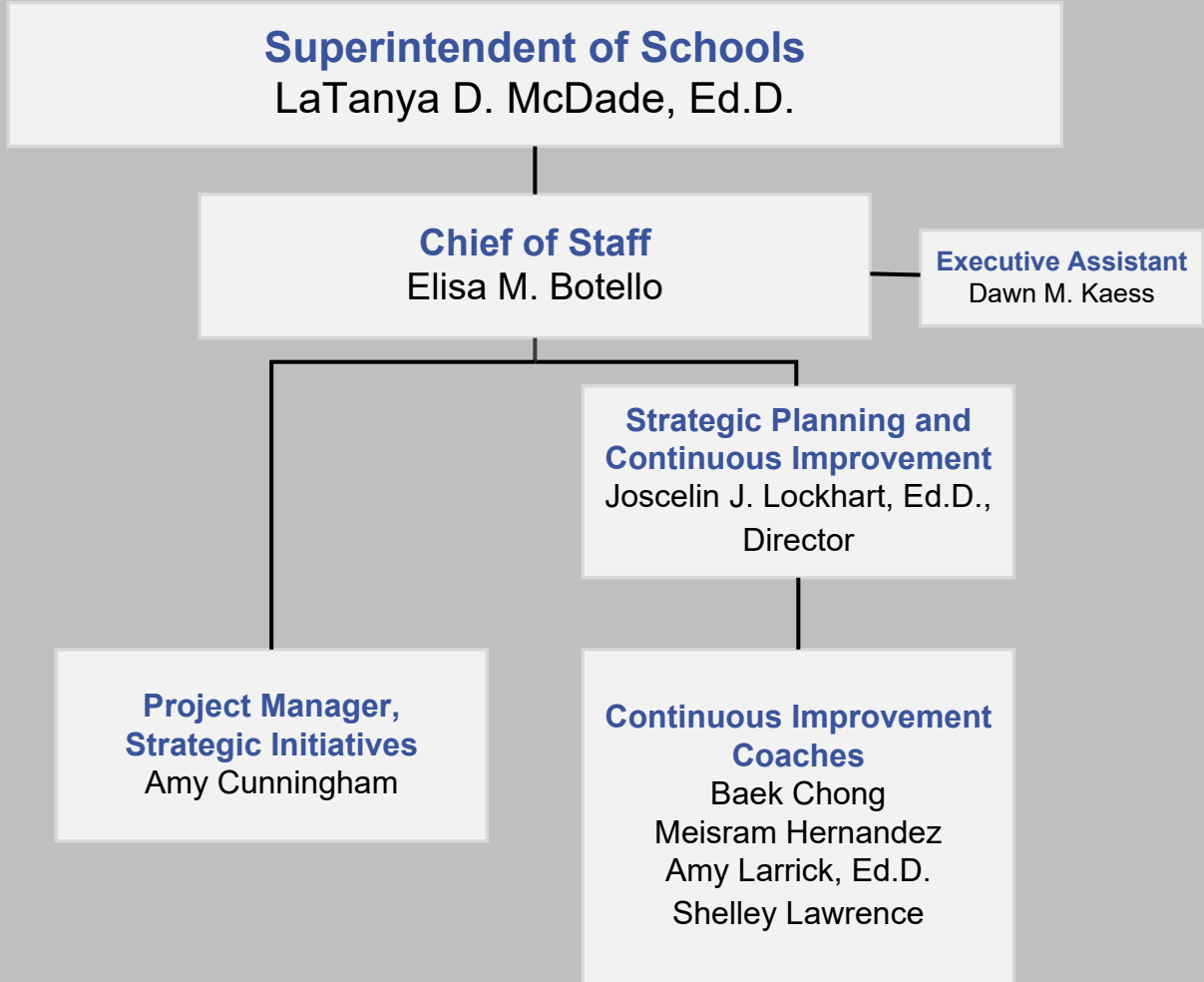
**Associate Superintendent  
for Western Elementary  
Schools**  
Kimberly A. Gudinas



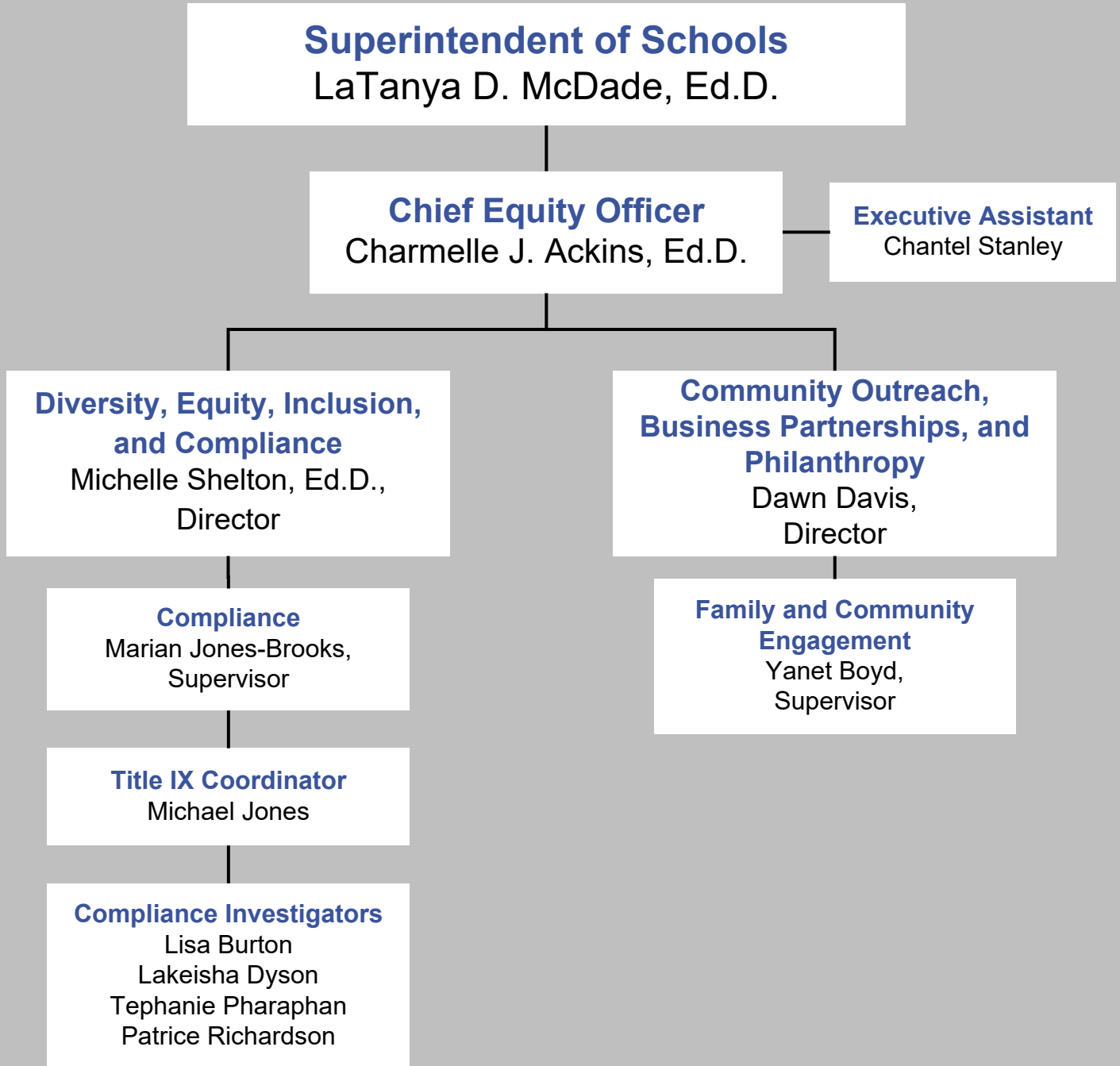
# OFFICE OF THE DEPUTY SUPERINTENDENT



# OFFICE OF THE CHIEF OF STAFF



# OFFICE OF THE CHIEF EQUITY OFFICER



# OFFICE OF THE CHIEF FINANCIAL OFFICER

**Superintendent of Schools**

LaTanya D. McDade, Ed.D.

**Chief Financial Officer**

Shakeel Yusuf

**Executive Assistant**

Anne Dean

**Finance Department**

LaToya Thomas,  
Director

**Budget Department**

Joseph Mondoro,  
Director

**Finance**

Rene Gapasin,  
Assistant Director

**Accounting**

Matthew Gossage,  
Comptroller

**Budget**

Kathleen Addison,  
Assistant Director

**Budget**

Natasha Valencia,  
Supervisor

**Payroll**

Carol Beninca,  
Supervisor

**Business Applications**

Venkatram Mogili,  
Supervisor

**Planning and  
Financial Services**

David Beavers,  
Supervisor

**Budget Operations**

Khanie McDuffie,  
Supervisor

**Purchasing**

Colleen Keener,  
Supervisor

**Grants Development  
& Revenue  
Forecasting**

Sara Smith,  
Supervisor

**Supply Services**

Daniel Pickering,  
Manager

# OFFICE OF THE CHIEF HUMAN RESOURCES OFFICER

## Superintendent of Schools

LaTanya D. McDade, Ed.D.

## Chief Human Resources Officer

Donna L. Eagle, Ed.D.

### Executive Assistant

Melissa R. Cook

### Talent Management Department

Michele T. Webb,  
Director

### Human Resources Department

Michele R. Salzano,  
Director

### Benefits and Compensation Department

Sandra D. Hardeman,  
Director

**Administrative Talent Development**  
Meredith Norris,  
Supervisor

**Organization and Leadership Development**  
Arletha Dockery,  
Supervisor

**Performance Management**  
Natalie K. Bonshire,  
Supervisor

**Human Resources**  
Michelle L. Colbert, Ed.D.,  
Assistant Director

**Compliance and Certification**  
Shelby G. Elliott,  
Supervisor

**Elementary School Personnel**  
Amber L. Macerelli,  
Supervisor

**Elementary School Personnel**  
Alfie L. Turner,  
Supervisor

**High School Personnel**  
Ryan S. Ferrera,  
Supervisor

**Middle School Personnel**  
Roberta L. Knetter, Ed.D.,  
Supervisor

**Special Education Staffing & Recruitment**  
William S. Reeder,  
Supervisor

**Administrative Employment**  
Connie S. Balkcom,  
Supervisor

**Classified Personnel**  
Jennifer W. Rydholm,  
Supervisor

**Classified Personnel**  
Julie T. Vuillemot,  
Supervisor

**Employee Relations**  
Matthew Wygal, Ed.D.,  
Supervisor

**Labor Relations**  
Bondy S. Gibson-Learn, Ed.D.,  
Supervisor

**Recruitment and Special Programs**  
Sean P. McDonald,  
Supervisor

**Substitutes and Temporary Employment**  
Christi S. Hetrick,  
Supervisor

**Benefits and Retirement Services**  
Elisa A. Pickette,  
Supervisor

**Compensation and Classification**  
Eunice B. Bourque,  
Supervisor





# OFFICE OF THE CHIEF INFORMATION OFFICER

## Superintendent of Schools

LaTanya D. McDade, Ed.D.

## Chief Information Officer

Matthew S. Guilfoyle

**Executive Assistant**

Victoria L. Dulany

### Communications Department

Diana C. Gulotta,  
Director

#### Interactive Media and Creative Design

James Lepp,  
Supervisor

#### Multimedia Design

Maria DellaFave,  
Supervisor

#### Web and Social Media Services

Stanley Olshefski,  
Supervisor

#### Imaging Center

William Goswellen,  
Foreman

### Information and Instructional Technology Department

AJ Phillips,  
Director

#### Information and Instructional Technology

Ken Melnikoff,  
Assistant Director

#### Records & FERPA Compliance

Tracey Beaver,  
Supervisor

#### Network Services and Architecture

VACANT,  
Supervisor

#### Information Systems Support

Debbie Miller,  
Supervisor

#### Information Security

Jordan Milbert,  
Supervisor

#### Student Information Systems

Adam Nash,  
Supervisor

#### Instructional Technology Supervisors

Timothy Cruz,  
Kim McGee, Ed.D.

#### Workstation Support Services Supervisors

Lucky Davila  
Scott LaCasse  
Howard Pond

### Research, Assessment, and Data Services

Michael (Tim) Neall, Ph.D.,  
Director

#### Data Analysis and Reporting

Dina Ashley,  
Supervisor

#### Research and Program Evaluation

Christina Kuriacose,  
Supervisor

#### Testing

Paul Parker, Ph.D.,  
Supervisor

# OFFICE OF THE CHIEF OPERATING OFFICER

## Superintendent of Schools

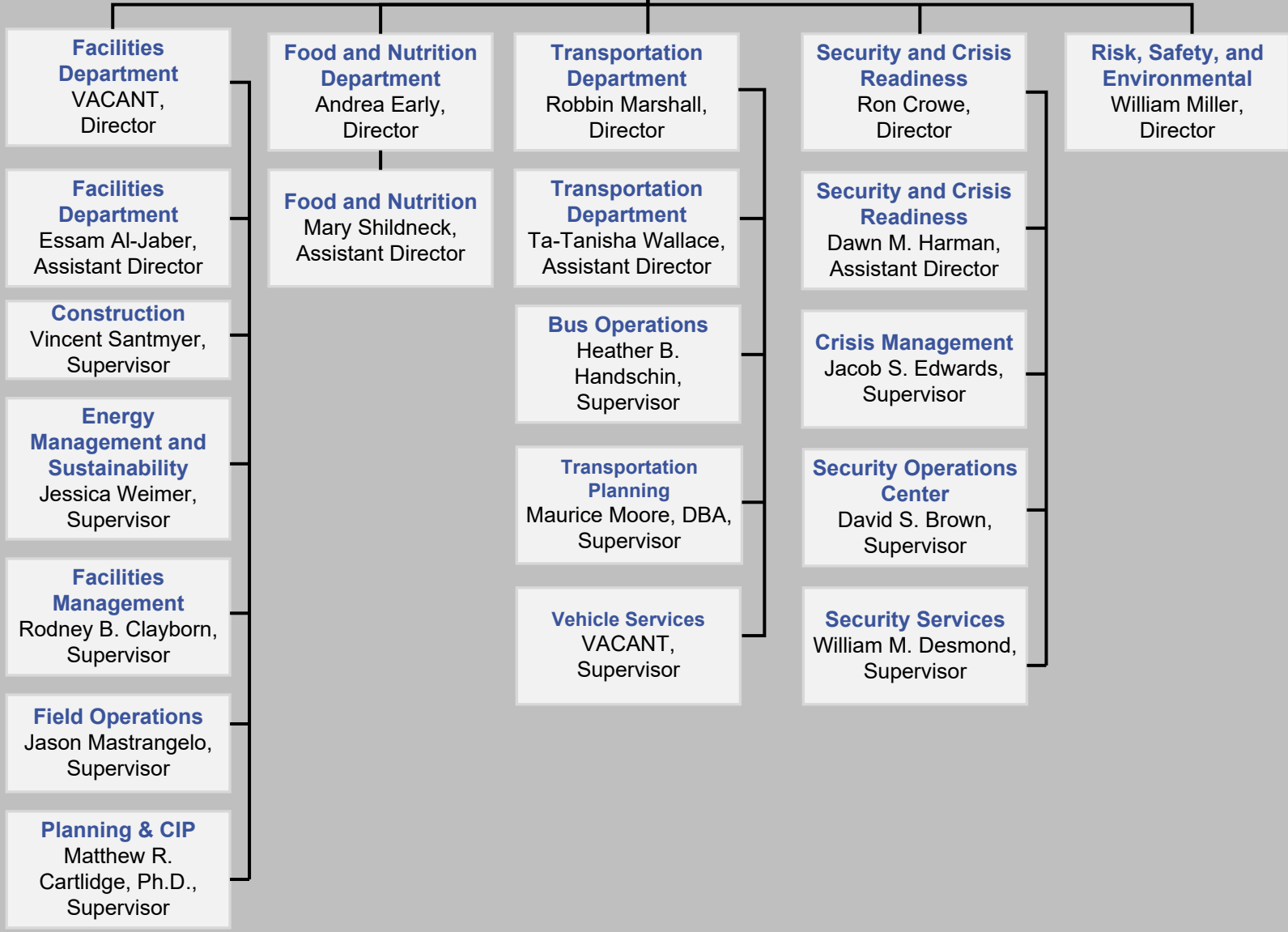
LaTanya D. McDade, Ed.D.

## Chief Operating Officer

Vernon J. Bock

**Executive Assistant**

Amanda Fazenbaker



# OFFICE OF THE ASSOCIATE SUPERINTENDENT FOR SPECIAL EDUCATION

## Superintendent of Schools

LaTanya D. McDade, Ed.D.

## Deputy Superintendent

Carol E. Flenard, Ed.D.

**Executive Assistant**

Laura McChain

## Associate Superintendent

Ashley E. Reyher, Ed.D.

**Executive Assistant**

Heather Duffett

### Special Education- Specialized Instruction

Aimee Holleb Ed.D.,  
Director

### Specialized Instruction Supervisors

Megan Everett  
Heather Grim  
Kathryn Johnson  
Ronald Pannell, Ph.D.  
Jessica Tra

### Early Childhood Special Education Supervisors

Rebecca McGuire  
Melissa Miller

### Special Education- Programs and Development

Wendy Martin-Johnson, Ed.D.  
Acting Director

#### Data and Transition

David F. Williams,  
Supervisor

#### Eligibility and Child Find

Shelly Legall-Brickey,  
Supervisor

#### Related Services

Tracy Bannon,  
Supervisor

#### Transition Services

Anthoula Johnson,  
Supervisor

#### Procedural Support

Amanda Mallory,  
Assistant Director

#### Procedural Support

Heather Riddle,  
Supervisor

#### Dispute Resolution

Chrystal Thompson,  
Supervisor

### Tiered Intervention and Supports

Darwin Barker, Ed.D.,  
Director

#### MTSS

Desmond Dawkins,  
Supervisor

**OFFICE OF THE ASSOCIATE SUPERINTENDENT FOR STUDENT SERVICES AND POST-SECONDARY SUCCESS**

**Superintendent of Schools**

LaTanya D. McDade, Ed.D.

**Deputy Superintendent**

Carol E. Flenard, Ed.D.

**Executive Assistant**

Laura L. McChain

**Associate Superintendent**

Denise M. Huebner

**Executive Assistant**

Stephanie Y. Stannard

**Career and Technical Education**

Sarah Martin, Ph.D.,  
Director

**Career and Technical Education**

Christine Good,  
Supervisor

**College, Career, and Student Support**

Rebekah Schlatter,  
Director

**College and Career Services**

Anaid Shaver, Ph.D.,  
Supervisor

**Elementary Counseling and Related Services**

Anne Henry,  
Supervisor

**Secondary Counseling**

Jane Prince,  
Supervisor

**Social and Emotional Learning**

Heather Wines,  
Supervisor

**Nontraditional Education and Interventions**

Joseph Thompson,  
Director

**Nontraditional Education Programs**

Wendy Downey,  
Supervisor

**Threat Assessment**

Dolores Robison, Ph.D.,  
Supervisor

**Student Health and Wellness**

Kala Goodwine, Ed.D.,  
Director

**School Age Child Care (SACC)**

Glynis Taylor, Ed.D.,  
Supervisor

**School Social Workers**

Anthony Clark,  
Supervisor

**Student Health Services**

Brenda Miller-Dorick,  
Supervisor

**Student Prevention Programs and Family Assistance**

Kim McClarin,  
Supervisor

**Student Hearings**

Teresa Duvall,  
Director

# OFFICE OF THE ASSOCIATE SUPERINTENDENT FOR TEACHING AND LEARNING

## Superintendent of Schools

LaTanya D. McDade, Ed.D.

### Deputy Superintendent

Carol E. Flenard, Ed.D.

**Executive Assistant**

Laura L. McChain

### Associate Superintendent for Teaching and Learning

Stephanie A. Soliven, Ed.D.

**Executive Assistant**

Robyn Dudas-Washington

#### Student Learning Department

Ashley Cramp, Ed.D.,  
Director

#### Student Learning Department

Alissa Fraser, Ed. D.,  
Assistant Director

#### Curriculum Supervisors

Brenda Bailey  
Annamarie Bollino  
Kelly Brown  
Carla Drew  
Jeffrey Girvan  
Rebecca Howery  
Justin Maffei, Ph.D.  
Marisa Miranda  
Julia Renberg, Ph.D.  
Diane Stinson

#### Professional Learning Department

Tiffany Hardy, Ph.D.,  
Director

#### Integrated Professional Learning

Alycia Hakes,  
Supervisor

#### Instructional Coaching

Meaghan Sekinger,  
Supervisor

#### Talent, Growth, and Development

Eric Worcester, Ed.D.,  
Supervisor

#### Student Opportunity and Multilingual Services Department

Lynmara Colón, Ph.D.,  
Director

#### EL Instruction Supervisors

Christina J. Lo  
Kristine Lentz-Johnston  
Felicia Norwood

#### Global Welcome Center

Helga Sanchez,  
Supervisor

#### Preschool Programs

Amanda Wilder,  
Supervisor

#### World Languages & DLI

Betsy Campagna,  
Supervisor

#### Sustainability of Federal Programs Supervisors

Barbara Bottoms  
Cheryl Lawrence  
Trista Mason

#### Title I and IV Instructional Programs

Victor Powell,  
Supervisor

# OFFICE OF THE ASSOCIATE SUPERINTENDENTS FOR HIGH SCHOOLS

## Superintendent of Schools

LaTanya D. McDade, Ed.D.

## Deputy Superintendent

Carol E. Flenard, Ed.D.

### Executive Assistant

Laura L. McChain

## Associate Superintendent

Gregory Hood

## Associate Superintendent

Keith F. Wolfe

### Executive Assistant

Cheryl Sheloski

## Director of High Schools

Tanganyika H. Millard, Ed.D.

### Executive Assistant

Maleny Lopez

## Student Activities and Athletics Department

Martin E. Grimm, Ed.D.,  
Director

## High Schools

Charles J. Colgan Sr.  
Freedom  
Gainesville  
Independence Nontraditional  
Osborn Park  
Patriot  
Unity Reed  
Virtual Prince William  
Woodbridge

## Aquatics Center

Allen (AJ) Dunn,  
Manager

## High Schools

Battlefield  
Brentsville District  
Forest Park  
Gar-Field  
Governor's School @ Innovation Park  
C.D. Hylton  
Juvenile Detention Center  
PACE West  
Potomac

## Virtual Prince William

Brett W. Helman,  
Supervisor



# OFFICE OF THE ASSOCIATE SUPERINTENDENTS FOR MIDDLE SCHOOLS

## Superintendent of Schools

LaTanya D. McDade, Ed.D.

## Deputy Superintendent

Carol E. Flenard, Ed.D.

### Executive Assistant

Laura L. McChain

## Associate Superintendent

Catherine R. Porter-Lucas

### Executive Assistant

Jascinda Jurgensen

## Associate Superintendent

Corey E. Harris

### Executive Assistant

Diane Sealock

## Director of Middle Schools

Joseph R. Graczyk

### Middle Schools

Fred Lynn  
Graham Park  
Hampton  
Lake Ridge  
The Nokesville School  
Parkside  
Porter Traditional  
Potomac Shores  
Reagan  
Unity Braxton

### Middle Schools

Benton  
Beville  
Bull Run  
Gainesville  
Marsteller  
Pennington Traditional  
Potomac  
Rippon  
Saunders  
Woodbridge

# OFFICE OF THE ASSOCIATE SUPERINTENDENTS FOR ELEMENTARY SCHOOLS

## Superintendent of Schools

LaTanya D. McDade, Ed.D.

## Deputy Superintendent

Carol E. Flenard, Ed.D.

### Executive Assistant

Laura L. McChain

## Associate Superintendent

R. Todd Erickson

## Associate Superintendent

Kimberly A. Werle

## Associate Superintendent

Kimberly A. Gudinas

### Executive Assistant

Terry T. Meyer

### Executive Assistant

Cynthia L. Luttrell

### Executive Assistant

Katie L. Burke

## Director of Elementary Schools

Kathryn E. Forgas

## Director of Elementary Schools

Valerie K. Hardy

## Central Elementary Schools

Ashland  
Bel Air  
Bennett  
Coles  
Dale City  
Enterprise  
Fitzgerald  
Henderson  
Kerrydale  
King  
Kyle Wilson  
Lake Ridge  
Marshall  
McAuliffe  
Minnieville  
Montclair  
Pattie  
Penn  
Rosa Parks  
Signal Hill  
Springwoods  
Washington-Reid (Pre-K)  
Westridge

## Eastern Elementary Schools

Antietam  
Belmont  
Covington-Harper  
Dumfries  
Featherstone  
John D. Jenkins  
Kilby  
Leesylvania  
Mary Williams  
Marumscow Hills  
Neabsco  
Occoquan  
Old Bridge  
Potomac View  
River Oaks  
Rockledge  
Swans Creek  
Triangle  
Vaughan

## Western Elementary Schools

Alvey  
Bristow Run  
Buckland Mills  
Cedar Point  
Chris Yung  
Ellis  
Glenkirk  
Gravely  
Haymarket  
Innovation  
Loch Lomond  
Mountain View  
Mullen  
Piney Branch  
Sinclair  
Sudley  
T. Clay Wood  
Tyler  
Victory  
West Gate  
Yorkshire