

# SCHOOL BOARD

## Citizens of Prince William County

### Prince William County School Board

**Babur B. Lateef, M.D.**  
Chairman At-Large

**Erica C. Tredinnick**  
Brentsville District

**Lisa A. Zargarpur**  
Vice Chairwoman  
Coles District

**Jennifer T. Wall**  
Gainesville District

**Tracy L. Blake**  
Neabsco District

**Richard M. Jessie**  
Occoquan District

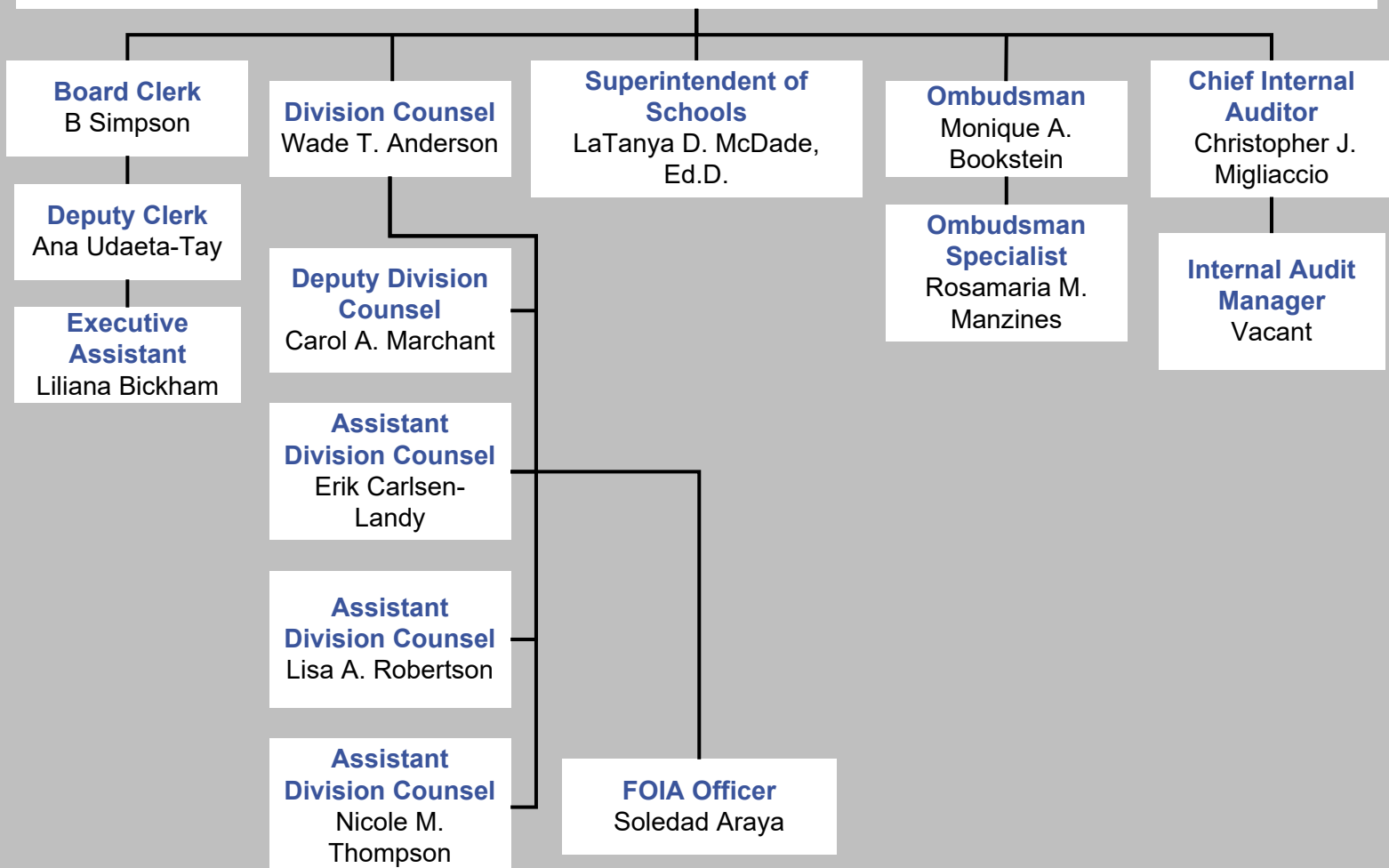
**Justin David Wilk**  
Potomac District

**Loree Y. Williams**  
Woodbridge District

**Isabella Aversano**

**Fernanda Morante Escobedo**  
Student Representatives

**Jackelin Garcia**



# OFFICES OF THE DIVISION COUNSEL, OMBUDSMAN, AND AUDITOR

## Prince William County School Board

### Chief Internal Auditor

Christopher J. Migliaccio

### Internal Audit Manager

Vacant

### Division Counsel

Wade T. Anderson

**Paralegal/  
Executive Assistant**  
Claudia L. Cartagena

### Deputy Division Counsel

Carol A. Marchant

**Assistant  
Division Counsel**  
Erik Carlsen-Landy

**Assistant  
Division Counsel**  
Lisa A. Robertson

**Assistant  
Division Counsel**  
Nicole M. Thompson

**FOIA Officer**  
Soledad Araya

### Ombudsman

Monique A. Bookstein

### Ombudsman Specialist

Rosamaria M. Manzines

## Prince William County School Board

### Superintendent of Schools

LaTanya D. McDade, Ed.D.

**Executive Assistant**

Jessica D. Beverley

#### Chief of Staff

Elisa M. Botello

#### Deputy Superintendent

Carol E. Flenard, Ed.D.

**Executive Assistant**

Sandy L. Shackelford

#### Acting Chief Equity Officer

Charmelle J. Ackins, Ed.D.

#### Associate Superintendent for Special Education

Ashley E. Reyher, Ed.D.

#### Associate Superintendent for Middle Schools

Corey E. Harris

#### Chief Financial Officer

Shakeel Yusuf

#### Associate Superintendent for Student Services and Post-Secondary Success

Denise M. Huebner

#### Associate Superintendent for Middle Schools

Catherine R. Porter-Lucas

#### Chief Human Resources Officer

Donna L. Eagle, Ed.D.

#### Associate Superintendent for Teaching and Learning

Stephanie A. Soliven, Ed.D.

#### Associate Superintendent for Central Elementary Schools

R. Todd Erickson

#### Chief Information Officer

Matthew S. Guilfoyle

#### Associate Superintendent for High Schools

Gregory S. Hood

#### Associate Superintendent for Eastern Elementary Schools

Kimberly A. Werle

#### Chief Operating Officer

Vernon J. Bock

#### Associate Superintendent for High Schools

Keith F. Wolfe

#### Associate Superintendent for Western Elementary Schools

Kimberly A. Gudinas

# OFFICE OF THE DEPUTY SUPERINTENDENT

## Superintendent of Schools

LaTanya D. McDade, Ed.D.

## Deputy Superintendent

Carol E. Flenard, Ed.D.

### Executive Assistant

Sandy L. Shackelford

### Associate Superintendent for Special Education

Ashley E. Reyher, Ed.D.

### Associate Superintendent for Middle Schools

Corey E. Harris

### Associate Superintendent for Student Services and Post- Secondary Success

Denise M. Huebner

### Associate Superintendent for Middle Schools

Catherine R. Porter-Lucas

### Associate Superintendent for Teaching and Learning

Stephanie A. Soliven, Ed.D.

### Associate Superintendent for Central Elementary Schools

R. Todd Erickson

### Associate Superintendent for High Schools

Gregory S. Hood

### Associate Superintendent for Eastern Elementary Schools

Kimberly A. Werle

### Associate Superintendent for High Schools

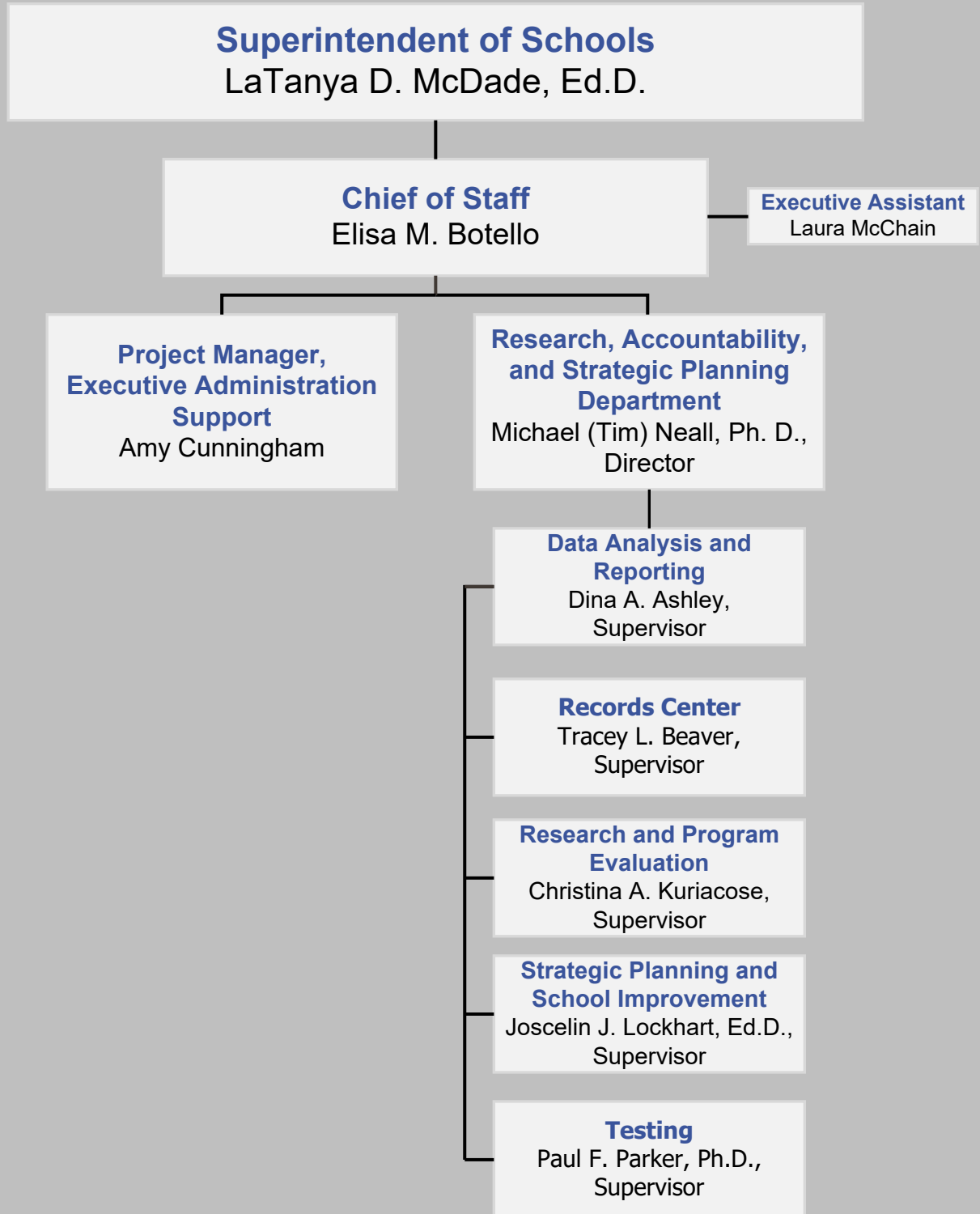
Keith F. Wolfe

### Associate Superintendent for Western Elementary Schools

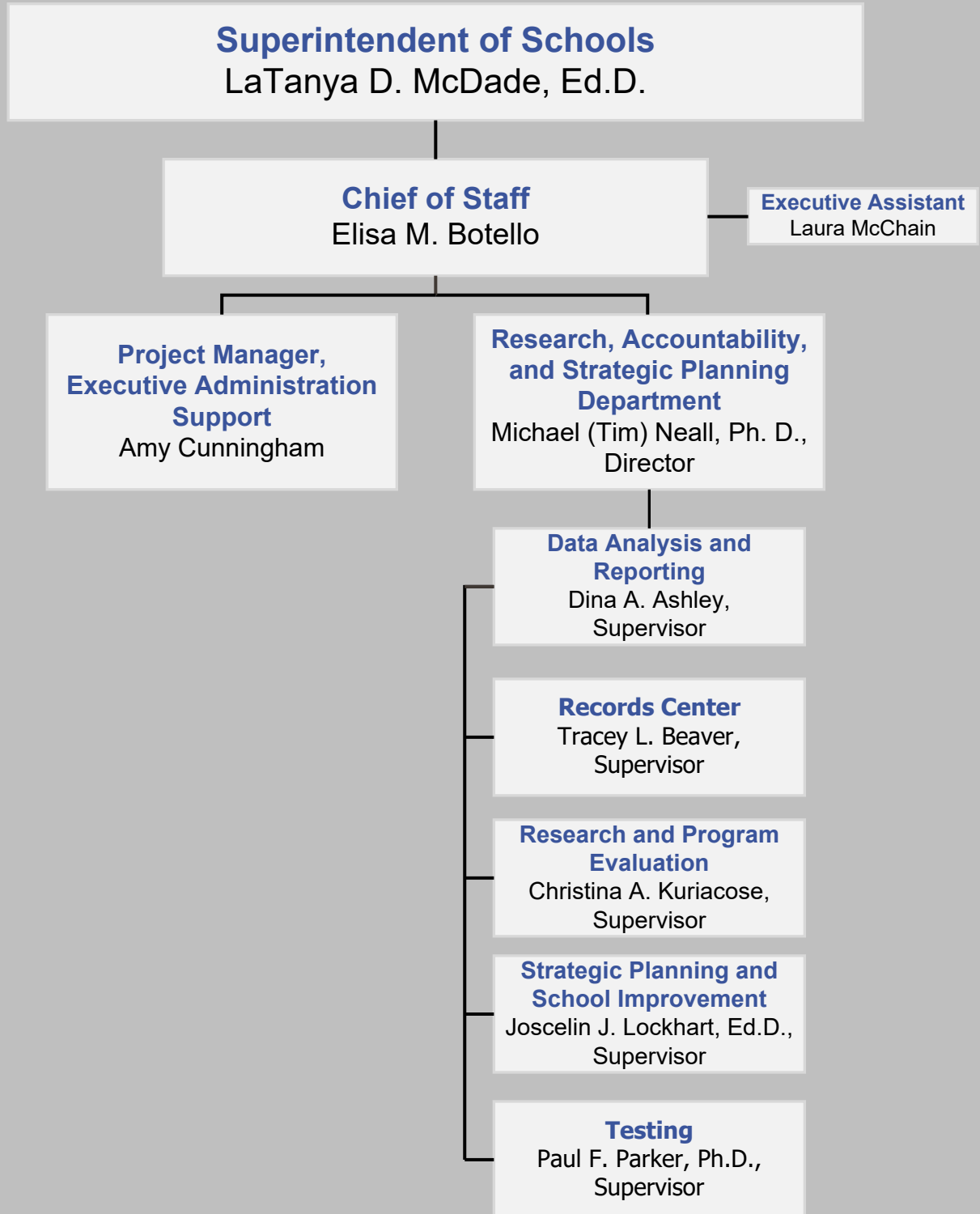
Kimberly A. Gudinas



# OFFICE OF THE CHIEF OF STAFF



# OFFICE OF THE CHIEF OF STAFF



# OFFICE OF THE CHIEF EQUITY OFFICER

**Superintendent of Schools**  
LaTanya D. McDade, Ed.D.

**Acting Chief Equity Officer**  
Charmelle J. Ackins, Ed.D.

**Executive Assistant**  
Dawn M. Kaess

**Diversity, Equity, Inclusion,  
and Compliance Department**  
Vacant,  
Director

**Title IX Coordinator**  
Vacant

**Family and Community  
Engagement**  
Yanet Boyd,  
Supervisor

**Compliance Supervisor**  
Vacant,  
Administrator

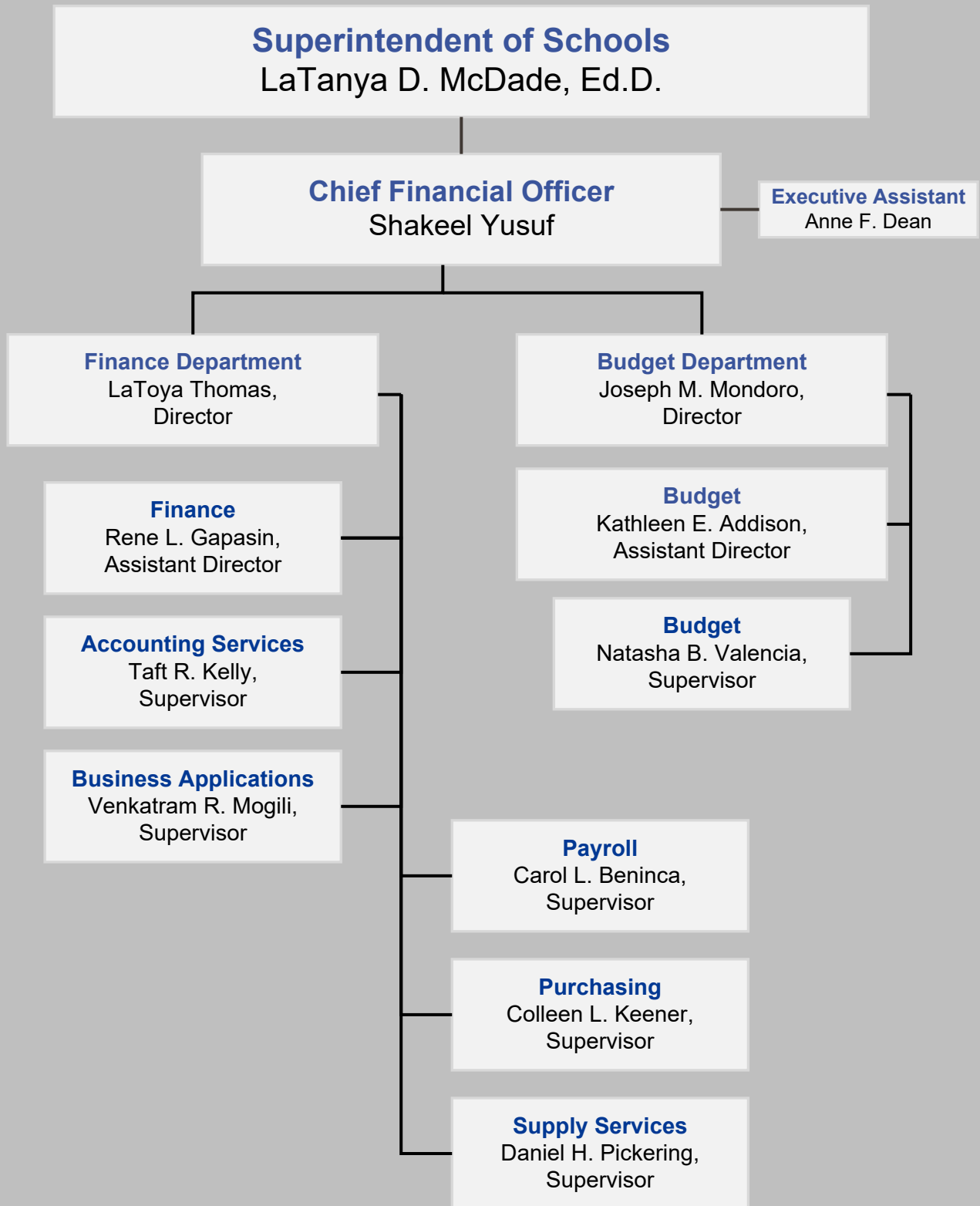
**Compliance Investigator**  
Lakeisha N. Dyson

**Compliance Investigator**  
Michael E. Jones

**Compliance Investigator**  
Vacant



# OFFICE OF THE CHIEF FINANCIAL OFFICER





# OFFICE OF THE CHIEF HUMAN RESOURCES OFFICER

## Superintendent of Schools

LaTanya D. McDade, Ed.D.

## Chief Human Resources Officer

Donna L. Eagle, Ed.D.

### Executive Assistant

Melissa R. Cook

### Administrative Recruitment and Retention

Connie S. Balkcom,  
Supervisor

### Human Resources Department

Michele R. Salzano,  
Director

### Benefits and Compensation Department

Joseph P. Makolandra,  
Director

#### Human Resources

Michelle L. Colbert, Ed.D.,  
Assistant Director

#### Benefits and Retirement Services

Elisa A. Pickette,  
Supervisor

#### Classified Personnel

Julie T. Vuillemot,  
Supervisor

#### Classified Personnel

Jennifer W. Rydholm,  
Supervisor

#### Compensation and Classification

Eunice B. Bourque,  
Supervisor

#### Employee Relations

Matthew Wygal, Ed.D.,  
Supervisor

#### Elementary School Personnel

Amber L. Macerelli,  
Supervisor

#### Elementary School Personnel

Alfie L. Turner,  
Supervisor

#### Performance Management

Natalie K. Bonshire,  
Supervisor

#### Middle School Personnel

Roberta L. Knetter, Ed.D.,  
Supervisor

#### High School Personnel

Ryan S. Ferrera,  
Supervisor

#### Substitutes and Temporary Employment

Christi S. Hetrick,  
Supervisor

#### Special Education Staffing and Recruitment

William S. Reeder,  
Supervisor

#### Recruitment and Specialty Programs

Sean P. McDonald,  
Supervisor



# OFFICE OF THE CHIEF INFORMATION OFFICER

## Superintendent of Schools

LaTanya D. McDade, Ed.D.

## Chief Information Officer

Matthew S. Guilfoyle

### Executive Assistant

Victoria L. Dulany

### Communications Department

Diana C. Gulotta,  
Director

### Information and Instructional Technology Department

AJ Phillips,  
Director

### Community and Business Engagement Department

Dawn S. Davis,  
Director

#### Interactive Media and Creative Design

James A. Lepp,  
Supervisor

#### Multimedia Design

Maria DellaFave,  
Supervisor

#### Web and Social Media Services

Stanley S. Olshefski,  
Supervisor

#### Imaging Center

William B. Goswellen,  
Foreman

#### Information and Instructional Technology

Ken Melnikoff,  
Assistant Director

#### Network Services and Architecture

Chris S. Hinzman,  
Supervisor

#### Information Systems Support

Debbie Miller,  
Supervisor

#### Information Security

Jordan Milbert,  
Supervisor

#### Student Information Systems

Adam P. Nash,  
Supervisor

#### Instructional Technology

Kim C. McGee, Ed.D.,  
Supervisor

#### Virtual Learning and Innovation

Timothy Cruz,  
Supervisor

#### Workstation Support

Scott S. LaCasse,  
Supervisor

#### Workstation Support

Lucky Davila,  
Supervisor

#### Help Desk & Workstation Support

Howard D. Pond,  
Supervisor

# OFFICE OF THE CHIEF OPERATING OFFICER

## Superintendent of Schools

LaTanya D. McDade, Ed.D.

## Chief Operating Officer

Vernon J. Bock

### Executive Assistant

Amanda Fazenbaker

### Facilities Department

Heather Diez,  
Director

### Facilities Department

Vacant,  
Assistant Director

### Construction

Vincent Santmyer,  
Supervisor

### Field Operations

Neil L. Bagnell,  
Supervisor

### Facilities Management

Rodney B. Clayborn,  
Supervisor

### Planning and Financial Services

David L. Beavers,  
Supervisor

### CIP and Land Acquisition

Matthew L. Townsend,  
Supervisor

### Food and Nutrition Department

Vacant,  
Director

### Food and Nutrition

Mary Shildneck,  
Assistant Director

### Planning

Matthew R. Cartlidge,  
Ph.D.,  
Supervisor

### Energy Management and Sustainability

Jessica Weimer,  
Supervisor

### Transportation Department

Robbin Marshall,  
Director

### Bus Operations

Heather B. Handschin,  
Supervisor

### Transportation Planning

Maurice W. Moore,  
Supervisor

### Vehicle Services

David C. Walton,  
Supervisor

### Risk Management and Security Department

Ron D. Crowe,  
Director

### Risk Management and Security

Dawn M. Harman,  
Assistant Director

### Crisis Management

Jacob S. Edwards,  
Supervisor

### Risk Management

William W. Miller,  
Supervisor

### Security Operations Center

Davis S. Brown,  
Supervisor

### Security Services

William M. Desmond,  
Supervisor

# OFFICE OF THE ASSOCIATE SUPERINTENDENT FOR SPECIAL EDUCATION

## Superintendent of Schools

LaTanya D. McDade, Ed.D.

## Deputy Superintendent

Carol E. Flenard, Ed.D.

### Executive Assistant

Sandy L. Shackelford

## Associate Superintendent

Ashley E. Reyher, Ed.D.

### Executive Assistant

Heather Duffett

### Special Education- Specialized Instruction

Aimee J. Holleb Ed.D.,  
Director

### Specialized Instruction Supervisors

Megan T. Everett  
Heather L. Grim  
Kathryn L. Johnson  
Ronald H. Pannell, Ph.D.  
Jessica P. Tra

### Early Childhood Special Education Supervisors

Rebecca L. McGuire  
Melissa L. Miller

### Special Education- Programs and Development

Wendy Martin-Johnson, Ed.D.  
Acting Director

### Procedural Support

Amanda V. Mallory,  
Assistant Director

### Eligibility and Childfind

Shelly A. Legall-Brickey,  
Supervisor

### Data and Transition

David F. Williams,  
Supervisor

### Related Services

Tracy A. Bannon,  
Supervisor

### Tiered Intervention and Supports

Darwin Barker, Ed.D.,  
Director

### MTSS

Desmond Dawkins,  
Supervisor

**OFFICE OF THE ASSOCIATE SUPERINTENDENT FOR STUDENT SERVICES AND POST-SECONDARY SUCCESS**

**Superintendent of Schools**

LaTanya D. McDade, Ed.D.

**Deputy Superintendent**

Carol E. Flenard, Ed.D.

**Executive Assistant**

Sandy L. Shackelford

**Associate Superintendent**

Denise M. Huebner

**Executive Assistant**

Stephanie Y. Stannard

**Career and Technical Education**

Sarah J. Martin, Ph.D.,  
Director

**Career and Technical Education**

Christine D. Good,  
Supervisor

**Student Health and Wellness**

Pamela B. Bell,  
Director

**School Age Childcare (SACC)**

Glynis A. Taylor, Ed.D.,  
Supervisor

**Social Work Services**

Anthony Clark,  
Supervisor

**Student Health Services**

Brenda S. Miller-Dorick,  
Supervisor

**Student Prevention Programs and Family Assistance**

Tamaica S. Martin, Ed.D.,  
Supervisor

**College, Career, and Student Support**

Rebekah W. Schlatter,  
Director

**College and Career Counseling Services**

Anaid Shaver, Ph.D.,  
Supervisor

**Elementary Counseling and Related Services**

Anne S. Henry,  
Supervisor

**Secondary Counseling and Related Services**

Jane E. Prince,  
Supervisor

**Social and Emotional Learning**

Heather L. Wines,  
Supervisor

**Student Management and Alternative Programs**

Dara J. Dugger,  
Director

**Nontraditional Education Programs**

Wendy L. Downey,  
Supervisor

**Student Management**

Rupinder K. Bhatti,  
Supervisor

**Threat Assessment**

Dolores A. Robison, Ph.D.,  
Supervisor

# OFFICE OF THE ASSOCIATE SUPERINTENDENT FOR TEACHING AND LEARNING

## Superintendent of Schools

LaTanya D. McDade, Ed.D.

## Deputy Superintendent

Carol E. Flenard, Ed.D.

### Executive Assistant

Sandy L. Shackelford

## Associate Superintendent for Teaching and Learning

Stephanie A. Soliven, Ed.D.

### Executive Assistant

Cheryl L. Osborne

### Student Learning Department

Ashley M. Cramp, Ed.D.,  
Director

#### Curriculum Supervisors

Annamarie S. Bollino  
Carla N. Drew  
Jeffrey M. Girvan  
Rebecca A. Howery  
Justin T. Maffei, Ph.D.  
Julia Renberg, Ph.D.  
Diane V. Stinson

### Professional Learning Department

Tiffany D. Hardy, Ph.D.,  
Director

#### Integrated Professional Learning

Alycia L. Hakes,  
Supervisor

#### Instructional Coaching

Meaghan Sekinger,  
Supervisor

#### Leadership Development

Michele Webb,  
Supervisor

#### Talent, Growth, and Development

Eric W. Worcester, Ed.D.,  
Supervisor

### Student Opportunity and Multilingual Services Department

Lynmara Colón, Ph.D.,  
Director

#### EL Instruction

Christina J. Lo,  
Supervisor

#### Gifted Education

Brenda S. Bailey,  
Supervisor

#### Title I

Michelle C. Rowe,  
Supervisor

#### Global Welcome Center

Helga Sanchez,  
Supervisor

#### Preschool Programs

Amanda J. Wilder,  
Supervisor

#### Advanced Academic and Specialty Programs

Kelly A. Brown,  
Supervisor

#### World Languages

Betsy G. Campagna,  
Supervisor

#### Sustainability of Federal Programs Supervisors

Barbara Bottoms  
Cheryl Lawrence  
Kristine Lentz-Johnston  
Trista Mason  
Felicia Norwood

# OFFICE OF THE ASSOCIATE SUPERINTENDENTS FOR HIGH SCHOOLS

## Superintendent of Schools

LaTanya D. McDade, Ed.D.

## Deputy Superintendent

Carol E. Flenard, Ed.D.

### Executive Assistant

Sandy L. Shackelford

## Associate Superintendent

Gregory Hood

### Executive Assistant

Cheryl Sheloski

## Director of High Schools

Tanganyika H. Millard, Ed.D.

## Associate Superintendent

Keith F. Wolfe

### Executive Assistant

Maleny Lopez

## Student Activities and Athletics Department

Martin E. Grimm, Ed.D.,  
Director

## High Schools

Charles J. Colgan Sr.  
Freedom  
Gainesville  
Independence Nontraditional  
Osborn Park  
Patriot  
Unity Reed  
Virtual Prince William  
Woodbridge

## Virtual Prince William

Brett W. Helman,  
Supervisor

## Aquatics Center

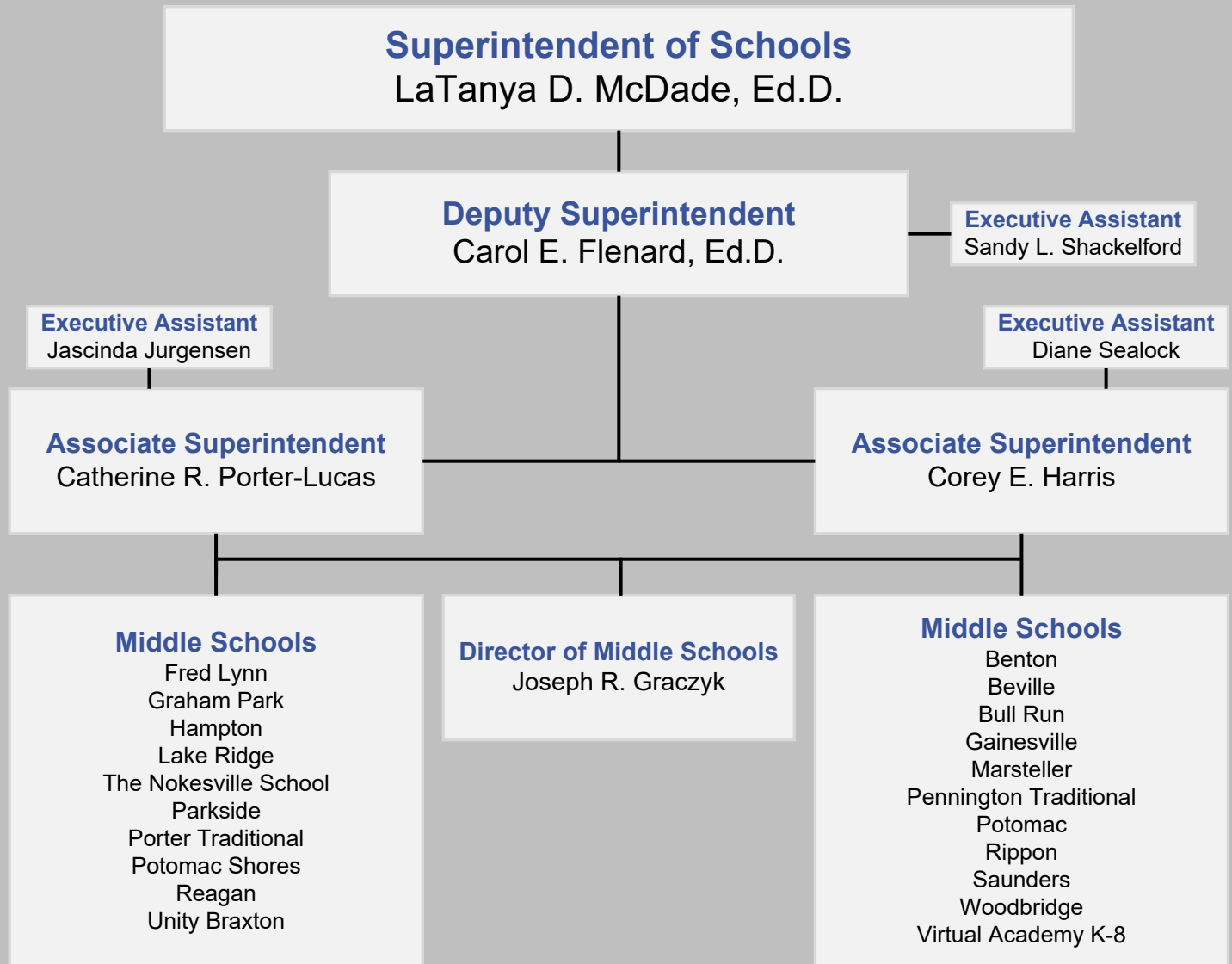
Allen (AJ) Dunn,  
Manager

## High Schools

Battlefield  
Brentsville  
Forest Park  
Gar-Field  
Governor's School @ Innovation Park  
Hylton  
Juvenile Detention Center  
PACE West  
Potomac



# OFFICE OF THE ASSOCIATE SUPERINTENDENTS FOR MIDDLE SCHOOLS





# OFFICE OF THE ASSOCIATE SUPERINTENDENTS FOR ELEMENTARY SCHOOLS

## Superintendent of Schools

LaTanya D. McDade, Ed.D.

## Deputy Superintendent

Carol E. Flenard, Ed.D.

### Executive Assistant

Sandy L. Shackelford

### Executive Assistant

Terry T. Meyer

### Executive Assistant

Cynthia L. Luttrell

### Executive Assistant

Katie L. Burke

## Associate Superintendent

R. Todd Erickson

## Associate Superintendent

Kimberly A. Werle

## Associate Superintendent

Kimberly A. Gudinas

## Director of Elementary Schools

Kathryn E. Forgas

## Director of Elementary Schools

Valerie K. Hardy

### Central Elementary Schools

Ashland  
Bel Air  
Bennett  
Coles  
Dale City  
Enterprise  
Fitzgerald  
Henderson  
Kerrydale  
King  
Kyle Wilson  
Lake Ridge  
Marshall  
McAuliffe  
Minnieville  
Montclair  
Pattie  
Penn  
Rosa Parks  
Signal Hill  
Springwoods  
Washington-Reid (Pre-K)  
Westridge

### Eastern Elementary Schools

Antietam  
Belmont  
Covington-Harper  
Dumfries  
Featherstone  
John D. Jenkins  
Kilby  
Leesylvania  
Mary Williams  
Marumscott Hills  
Neabsco  
Occoquan  
Old Bridge  
Potomac View  
River Oaks  
Rockledge  
Swans Creek  
Triangle  
Vaughan

### Western Elementary Schools

Alvey  
Bristow Run  
Buckland Mills  
Cedar Point  
Chris Yung  
Ellis  
Glenkirk  
Gravely  
Haymarket  
Innovation  
Loch Lomond  
Mountain View  
Mullen  
Piney Branch  
Sinclair  
Sudley  
T. Clay Wood  
Tyler  
Victory  
West Gate  
Yorkshire

